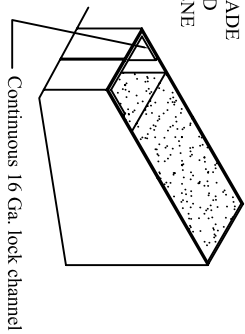


REPUBLIC'S DL SERIES EMBOSSED 2-PANEL DOOR

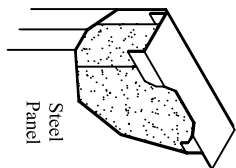
DIMENSIONS IN () ARE METRIC

DOOR CONSTRUCTION DETAILS

1 LB. TO 1.25 LB.
DENSITY PCF
REGULAR GRADE
EXPANDED
POLYSTYRENE
CORE

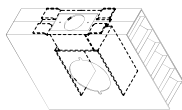
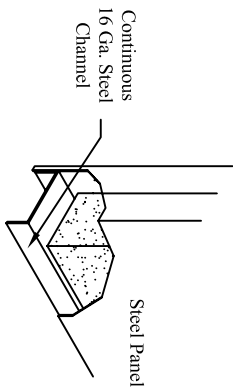


Flush Top Continuous
16 Ga. Steel Channel

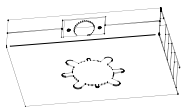


14 Ga. Closer
Reinforcement (OPT.)

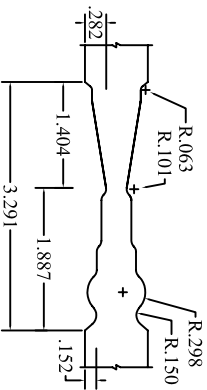
DOOR BOTTOM



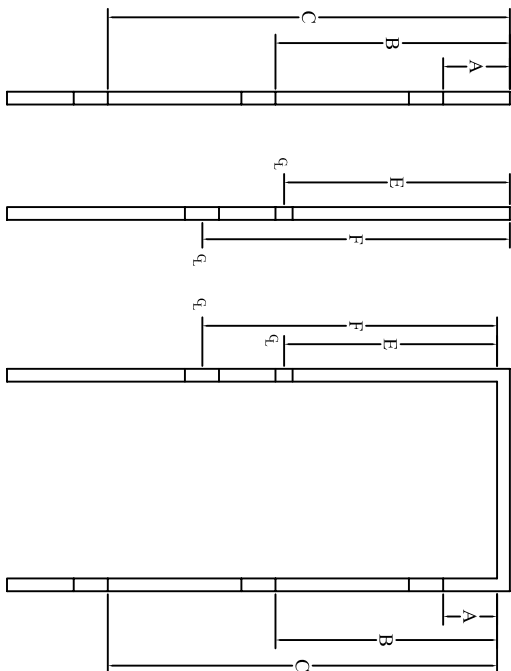
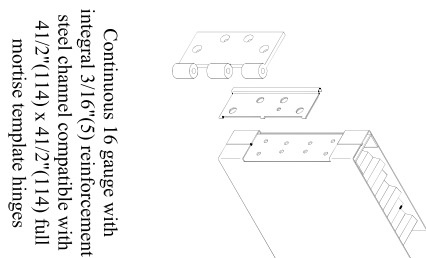
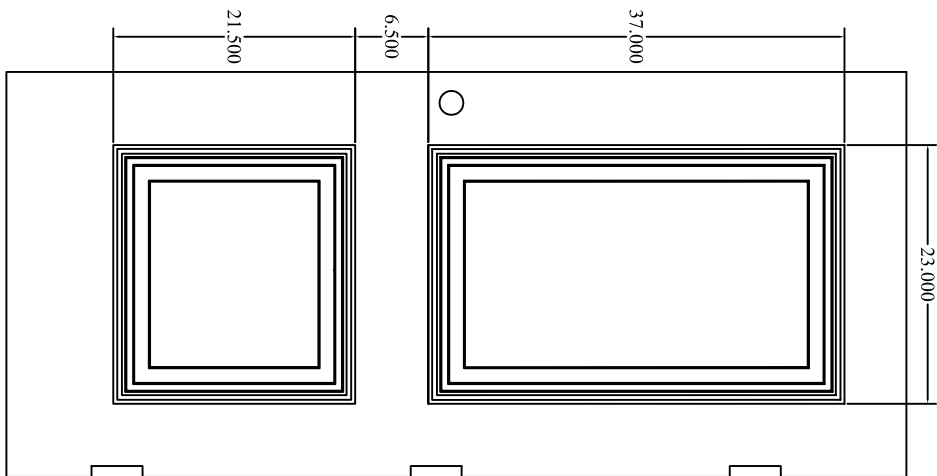
16 Ga. steel cylindrical lock reinforcement with provisions for Govt. Series 160 or 161 cylindrical lock sets (2-3/4" backset) and ANSI A115.2 lock front (1-1/8" x 2-1/4")



Lever Lock Prep -161 DT
(Modified 161 Prep)
Conforms with the ANSI
115.18 161 lever lock
Spec.
WARNING: Use ROSE TRIM with a minimum diameter of 3-5/16" to cover prep.



2-Panel High Definition
Embossment Details



	DOOR HNG	DOOR STK/LCK	FRAME	DOOR HNG	DOOR STK/LCK	FRAME	DOOR HNG
A	7-3/8"	-	7-1/2"	9-3/8"	-	9-1/2"	9-3/8"
B	37-5/16"	-	37-7/16"	39-5/16"	-	39-7/16"	40-5/16"
C	67-1/4"	-	67-3/8"	69-1/4"	-	69-3/8"	71-1/4"
E	-	31-7/8"	32"	-	35-7/8"	36"	-
F	-	CH 39-9/16" MOL 39-15/16	39-11/16"	-	CH 43-9/16" MOL 43-15/16	43-11/16"	-

A60 Galvanized Steel.

Available with Polystyrene Core Only.

Available in 18 or 20 Gage.

U.L. 1-1/2" Hr. "B" Label.

Maximum: 3472 Sgl/ 6872 Dbl. Without Fire Exit Hardware.

Size Limitations: Minimum - 2868 / Maximum - 3672

DIMENSIONS IN () ARE METRIC

For Standard hardware Locations
refer to Technical Data Sheet No. 502