

**EMBOSSSED PANEL DOORS**

**Republic**  
doors · frames

**Republic**  
doors · frames

**WR WINDSOR REPUBLIC DOORS**

## Traditional Designs

Republic's complete line of commercial hollow metal embossed panel doors provide the widest range of design flexibility to meet and exceed any of your architectural project needs. Republic traditional designs include 6-panel design, 8' 6-panel

design with elongated panels, 4 panel, and 8 panel designs. Doors are available in 20, 18, and 16 gage (6-panel only) cold rolled steel or galvanealed (A60) steel. Republic is the only manufacturer to offer 6-panel doors in 1 3/8" thick design!



2-panel



4-panel



6-panel



8-panel

## High Definition

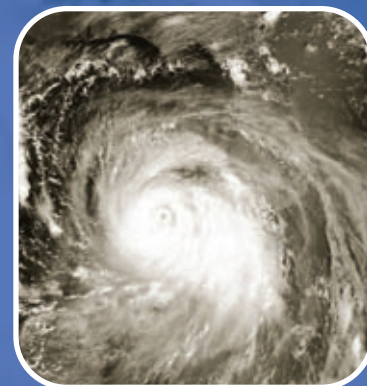
Whether you select our traditional design or our new HD steel door, you'll be adding a beautiful, durable entrance to any architectural opening with rich and distinctive panel embossments. Our new HD 2 & 6-Panel designs are the only doors available on the market with high definition style options.



## Hurricane Resistance

Over the last decade, the United States has experienced numerous hurricanes that have inflicted loss of life and property damage in excess of 40 billion dollars. In response, many coastal regions are now adopting strict building code provisions intended to enhance the structural integrity of commercial buildings.

Republic meets and exceeds these code requirements with our DL418 series embossed panel doors which hold the highest design pressure ratings in the industry (80 PSF In-swing and Out-swing). Republic doors have been tested and certified both as components and as complete assemblies. They are approved by the State of Florida for coastal areas subject to the damaging affects of hurricanes/windstorm force winds and debris.



## Standard Product Features

- 1 3/4" (44.4) design, rated for light to extra heavy-duty use
- Polystyrene core (1 pound density) 100% bonded to skins to provide exceptional insulation, strength, and flatness
- Hinge edge is non-beveled and reinforced with a full height 16 gage steel channel projection welded at a maximum of 5" on center with an additional 9 gauge reinforcement plate at each hinge location, providing more than 3/16" (5) of total reinforcement
- 16 gage flush top and inverted bottom channels projection welded to both skins every 2 1/2" on center
- Lock edge is non-beveled and reinforced with a continuous 16 gage channel, mortised and cylindrical lock reinforcements are integral 16 gage reinforcements
- Doors are prepared for 4 1/2" standard or heavy weight, full mortise template hinges
- Non-handed design (square lock edge)
- Doors are thoroughly cleaned, phosphatized, and primed with a coat of force cured rust inhibiting primer that meets and/or exceeds the requirements of ANSI A250.10 (120 hour continuous salt spray test per ASTM B117 and 240 hour continuous humidity test per ASTM D4585)
- Doors are individually packaged and fully plastic wrapped to prevent damage



## Available Options

- 14 gage closer reinforcement (standard option)
- 12 gage closer reinforcement
- A60 galvanealed, or textured wood-grain (wood grain embossed are available as prime painted only - factory stain not available)
- Continuously welded seamless design or filled seamless design
- Lock edge beveled 1/8" in 2"
- Sizes available: Minimum 2'8" x 6'8", Maximum 3'8" x 8'0" (20 gage available in 3070 or smaller only)
- 4" hinges (square edge only)
- Half glass light kits
- Finish paint (Republic standard and custom colors)
- STC 40 rated ( 6 panel only )
- 1 3/8" Thickness

## Fire Rated

Get up to 3 hours of fire protection with Republic's embossed panel doors. Republic embossed panel doors have been fire tested in accordance with UL 10B, UL 10C, UBC 7-2, and ASTM E-152 and are all produced under Underwriters Laboratories and Warnock Hersey/ITS factory inspection and labeling service program. Fire rating capabilities on these products also include the use of ceramic glass and special glazing compounds.